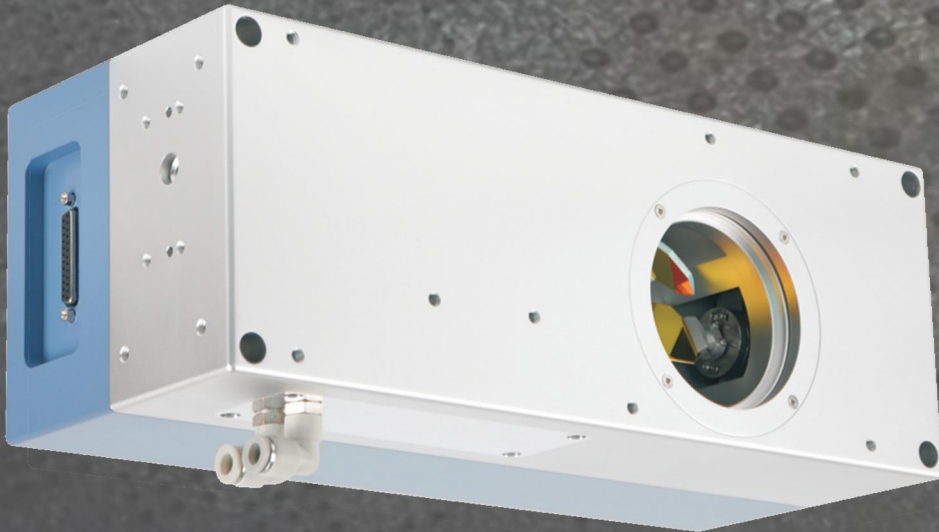


# Laser Cutting System

## NP/QP 30



### ▲ Laser Cutting System

For the laser cutting industry, the company has launched a two-dimensional large format laser cutting solution, including front-focused mirror scanning system NP/QP30 and motion control system RMC2 & RayMarking. RMC2 & RayMarking.

### ▲ Configuration

QP30 can be deeply customized to fit the application. Focusing spot is small and can achieve the same effect as the use of field mirrors, high line collimation, small jitter, edge consistent with the center.

NP30 scanner system is better than QP30, with high resolution, high linearity, low jitter, low zero point and gain drift characteristics, fully closed-loop control Precise positioning.

### ▲ Applications

Depending on the laser difference for different materials processing, including but not limited to paper, cardboard, wood, textiles, fabric, leather, plastic, film, glass, ceramics, thin metal plate, etc.

### ▲ 激光裁切系统

面向激光裁切行业，本司推出二维大幅面激光裁切解决方案，包括前聚焦振镜扫描系统 NP/QP30 和运动控制系统 RMC2 & RayMarking。

### ▲ 硬件配置

QP30 可根据应用范围进行深度定制。聚焦光斑小，可达到与使用场镜效果一致，线条准直度高，抖动小，边缘与中心效果一致。

NP30 振镜扫描系统性能更优于 QP30，具有高分辨率，高线性度，低抖动，低零点和增益漂移特性，全闭环控制定位精准。

### ▲ 行业应用

依据激光器区别适用不同材质加工，包括但不限于纸张、纸板、木材、纺织品、织物、皮革、塑料、薄膜、玻璃、陶瓷、薄金属板等。