



- 额定电流最高达 6A
Rated currents up to 6A
- 塑料或金属外壳，专为 PCB 板组装设计
Plastic or metal box, special design for PCB assembly
- 可选低漏电流型 (M 型)
Optional low leakage current (M Types)

特点 Features

- 塑料或金属外壳，专为 PCB 板组装设计
Plastic or metal box, special design for PCB assembly
- 小巧，插件式，有效滤除共模和差模噪声干扰
Small, insertion type, high performance of common mode and differential mode noise suppression

应用 Application

- 电源分配系统中的 PCB 组装及一般的 PCB 组装
PCB assembly for power supply, general PCBA assembly
- 超小型设备
Super small equipments

技术参数 Technical Data

额定电压 Rated Voltage	250VAC
工作频率 Operation Frequency	50/60Hz
额定电流 Rated Current	1-6A
耐压测试 Hi-pot Test	1450VDC, 2 sec (线对线 Line to Line) 2250VDC 2sec (线对地 Line to Ground)
气候类别 Climate Category	25/100/21 (-25°C to +100°C)
设计参考标准 Design corresponding to	UL 1283, CSA 22.2 No. 8 1986, IEC/EN 60939

电路原理图 Electrical Schematic

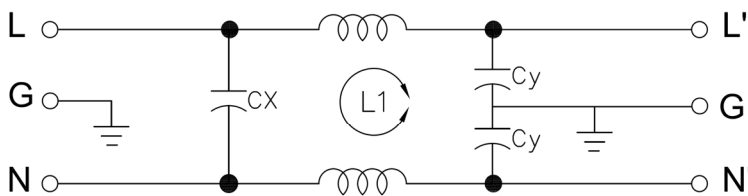


Fig 1

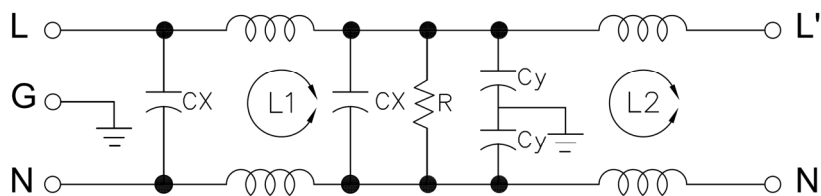
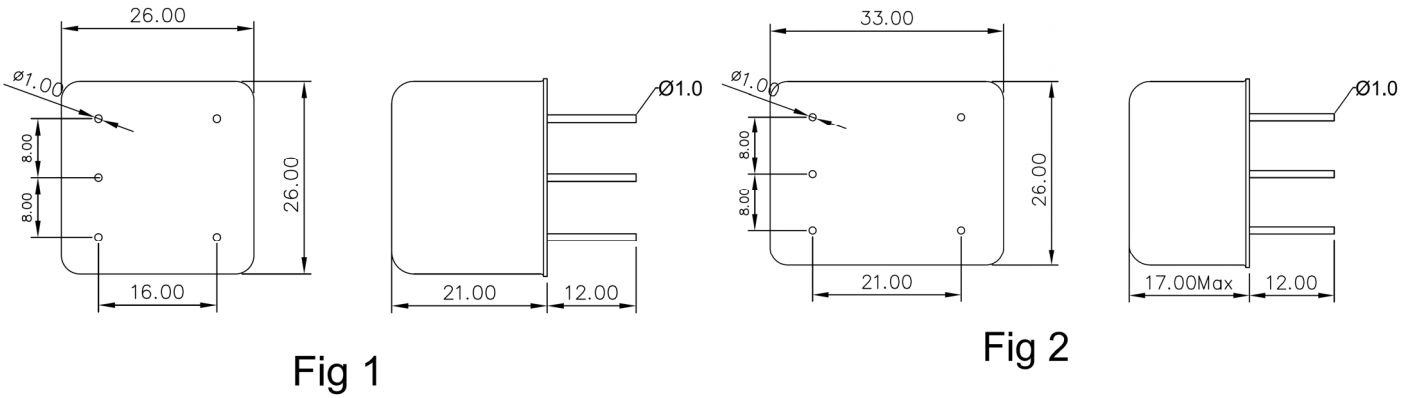


Fig 2

选型表 Type Selection Table

型号 Model	额定电流(A) Rated Current	泄漏电流(≤mA) Leakage Current	电路图 Circuit Diagram	外形尺寸 Dim. Fig.	端子方式 Terminal	
					入 Input	出 Output
DF700-1A-01	1	0.42	Fig 1	Fig 1	Lead	Lead
DF700-2A-01	2	0.42	Fig 1	Fig 1	Lead	Lead
DF700-3A-01	3	0.42	Fig 1	Fig 1	Lead	Lead
DF700-6A-01	6	0.42	Fig 1	Fig 1	Lead	Lead
DF700-1A-02	1	0.23	Fig 2	Fig 2	Lead	Lead
DF700-2A-02	2	0.23	Fig 2	Fig 2	Lead	Lead
DF700-3A-02	3	0.23	Fig 2	Fig 2	Lead	Lead
DF700-6A-02	6	0.23	Fig 2	Fig 2	Lead	Lead

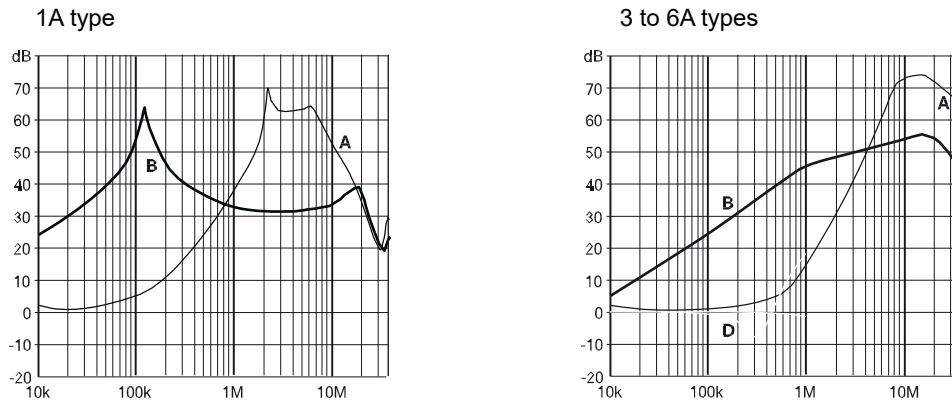
外形尺寸 Outline Dimensions(mm)



插入损耗 Insertion Loss in dB

(50Ω/50Ω 环境下插入损耗 Insertion Loss in dB measured in a 50Ω/50Ω system, as IEC/CISPR No. 17)

A=Differential mode (差模) B=Common Mode(共模)



备注：以上规格为公司标准产品，可根据客户产品定制设计产品性能和尺寸外观
如有 EMC 测试需求，请联系王经理 13382193729

Remark: Customized products are available according to special performance or dimensions requirements

If any EMC test requirement, please contact marketing@dephir.com

更多产品请登陆官方网站：<http://www.cndephir.com>

For more products please go to official website: <http://www.cndephir.com>